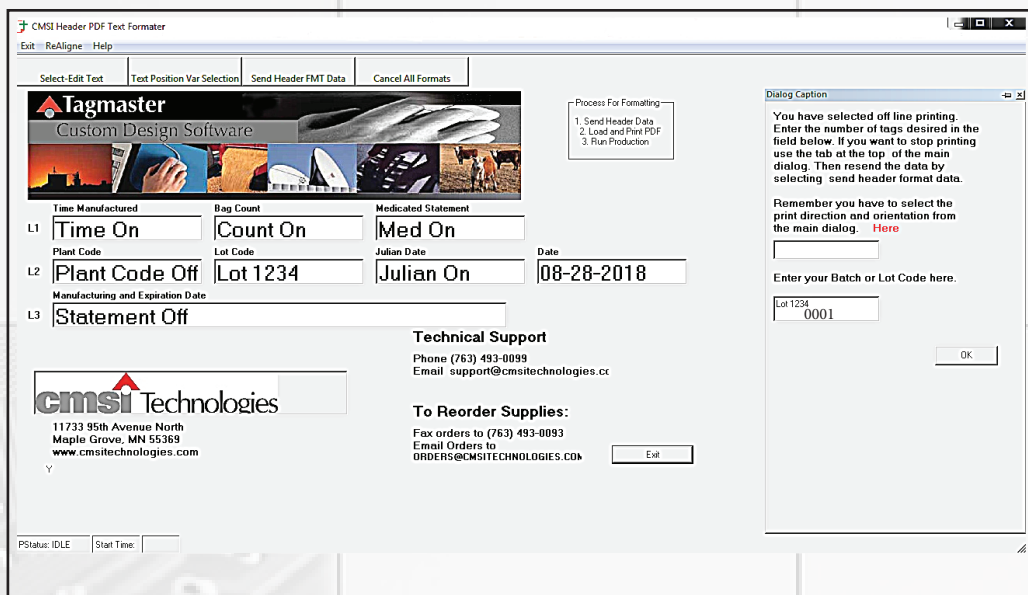


PDF Plus Software

Software that is simple, yet powerful. PDF Plus+ allows you to print from some of your favorite design programs directly to your Tagmaster while adding the most common variables needed in today's market.



Operator Screen

On the PDF Plus+ main screen, the user will see the variables that are currently active, which will populate the selected variables. The operator can enter the batch/Lot code, set the bag/box counter, send the file data, or clear the machine's current data. The software will automatically produce current time, date, and/or Julian date when selected.

Also available on the main screen is a quick access to the BAG/PACKAGE counter, as well as the LOT NUMBER input field. Both fields are commonly used in day to day operations.

Variables

This user variable set-up screen allows the customer to select the type of data needed to be printed on the product. These features are selected at time of setup, which will remain locked so the operators cannot access during operation. This will help assure data structure output and bar coding results will remain consistent.

Adjust CMSI Label/Tag Position/Add Variables

You may select one or more of the options below. To activate the feature you would like, click the check mark next to the item you want to use.

Variables On or Off
 On
 Off

Print Line Location
 Check for RT Side or Un Check for Bottom
 Check for text line to left or Un Check for Bottom

Off Line Mfg Tag Count
 Check for Reverse Print Count- Enter # Tags to Print

chkCurrentDate

Date Style
 Date MM-DD-YYYY
 Date DDDMMYYYY

Use Check boxes below to select variable and enter data where appropriate. Check Plant or Batch Checkbox First

Mtime Plant Code
 Julian Date Batch/Lot Nn

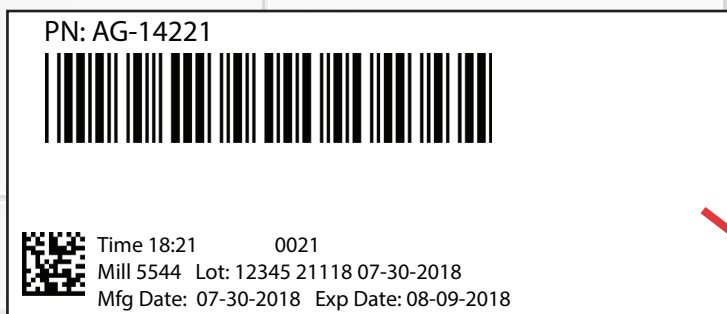
Add Tracking BarCode Bag Count Medicated

Save Exit Cancel

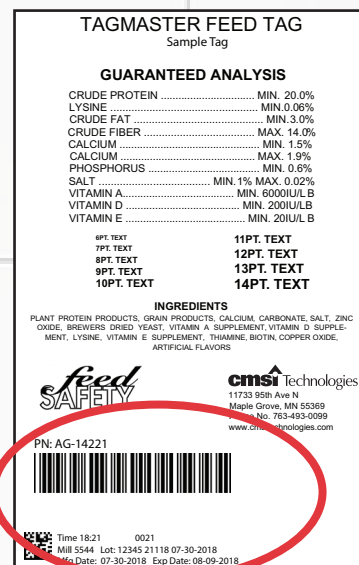
Track and Trace

In addition to the human readable data, printed on your label or tag, the PDF Plus+ software will create a unique barcode which is printed to the left of the data.

When paired with your product/part number, and either our Q.A. Scan or Track Scan product, you now have the power to collect the needed data to track and trace each package on your production line, and/or assure your product has a label or tag on every product.



For additional software services, please ask us about our TRACE-IT middleware product.



11733 95th Avenue North, Maple Grove, MN 55369

763-493-0099

www.cmsitechnologies.com



cmsi Technologies